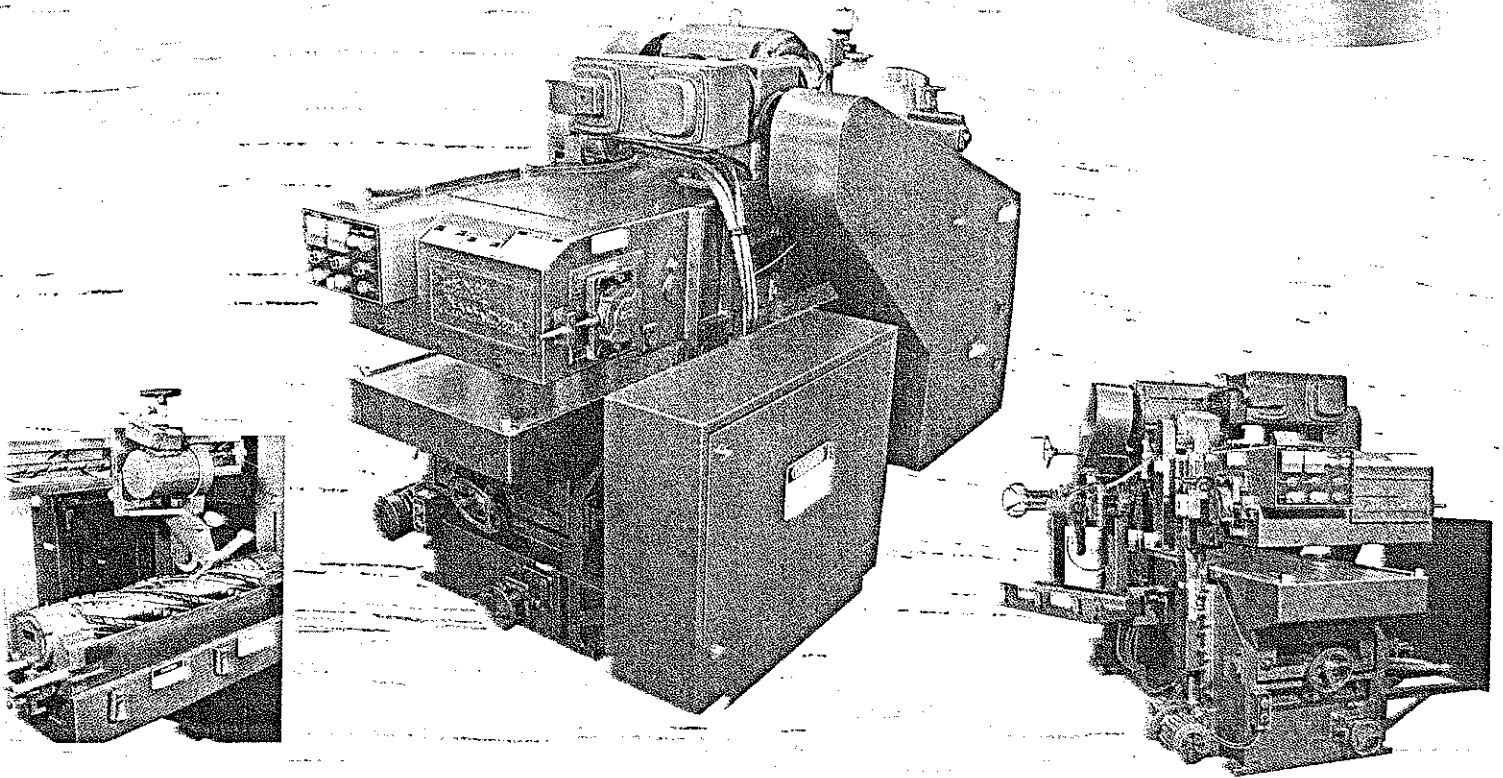


*Northfield*

# 2440

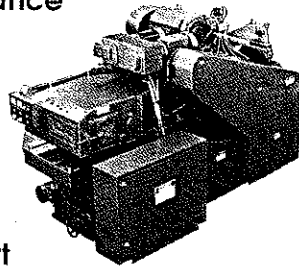
**double cutterhead facer planer**



**economical & versatile**  
**positive infeed**  
**conforming carpet**  
**accessible controls**  
**2-hour cutterhead**  
**mctc.**  
**power platen**  
**elevation**  
**automatic oiling**

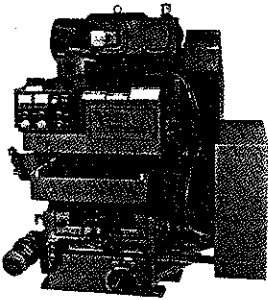
## economical & versatile

The Northfield 240 offers operating and maintenance economy with easy to use controls and total machine accessibility. The economical and versatile 240 has successfully run strips 1/4" thick x 1" wide. It handles butt pieces short as 6" and accepts stock 24" wide x 6" thick. Feed speeds adjust from 25 to 100 fpm.



## positive infeed

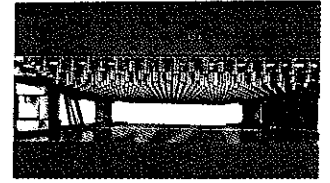
Cast infeed table has 1/2" vertical adjustment — helps assure positive feed when making deeper bottom cuts. Massive table rides on heavy cast iron ways. Infeed table and machine bed have side stock guides which prevent lateral runouts. All four 4" feed rolls are powered. Sectional



upper infeed roll has 2" milled ductile sections for positive feed. Upper rolls are spring loaded. Lower rolls are independently adjustable. Top cutterhead has full width, spring loaded, sectional chip breaker.

## conforming carpet

Main carpet feeds stock at 25 to 100 fpm. Carpet has over 1300 9/16" diameter pins arranged in tight rows. These small, spring loaded pins conform to irregular or warped surfaces better than large diameter, wide spaced pins. Pin downpressure is adjustable. Full-length carpet has 6' contact length — runs on heavy duty rollers. Carpet drive has overload clutch — drive releases when feed pressure is excessive. Carpet tension is adjustable with sight gauges.

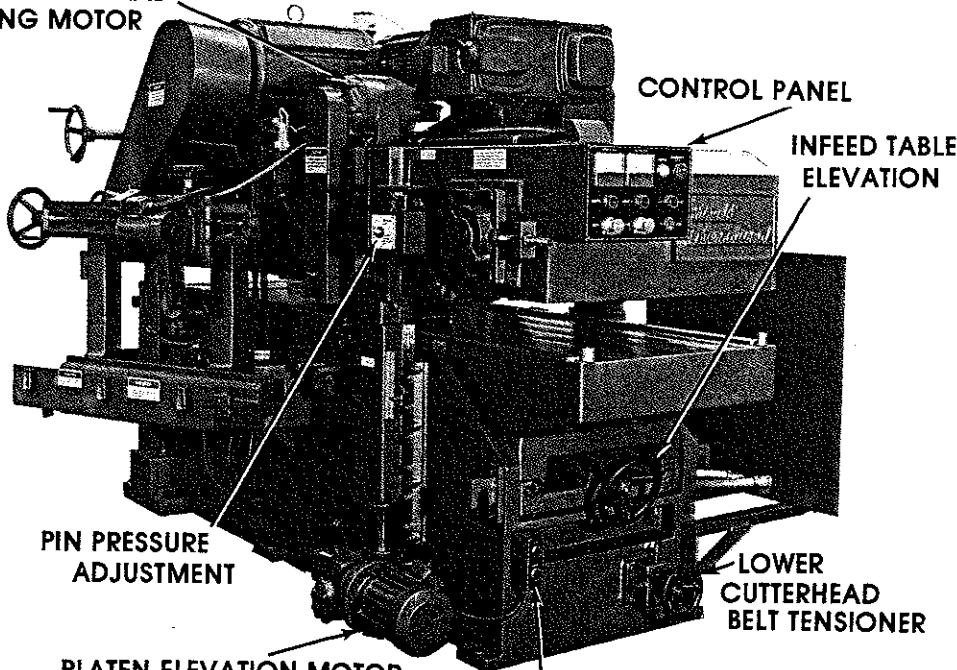


## accessible controls

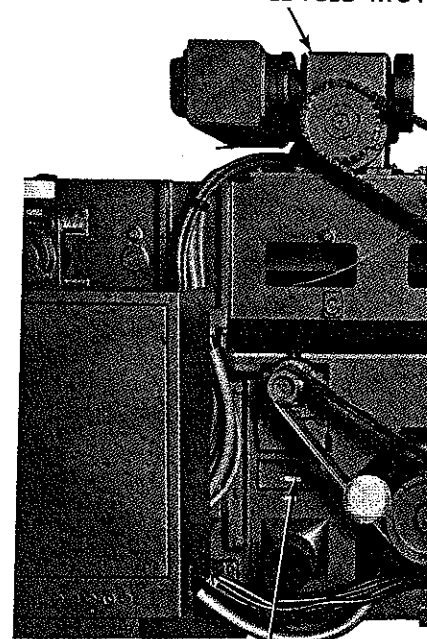
Main electrical control panel is easy to use and accessible from front of machine.

# 240 — the uptime fact own — easy to use —

LOWER CUTTERHEAD  
JOINTING MOTOR

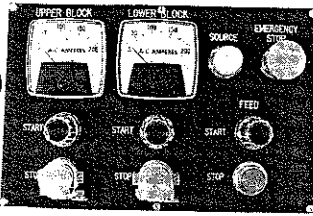


VARIABLE FEED MOTOR



LOWER CUTTERHEAD  
HEIGHT ADJUSTMENT

Cutterhead control switches can be locked out during cutterhead grinding. Other adjustment points are engineered for easy access, quick alignment and maximum uptime operation.



## 2-hour cutterhead mtce.

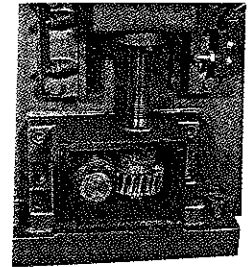
Jointing and grinding of cutterhead is done on the machine. Lower cutterhead slides onto machine grinding fixture. Eliminates need to work between carpet and machine bed. Upper cutterhead maintenance is done with the cutterhead in place. Both cutterheads are jointed for concentricity and hollow ground with a motor/diamond wheel assembly provided with the 240. Individual cutterhead



maintenance takes less than two hours. High impact grinding shield provided.

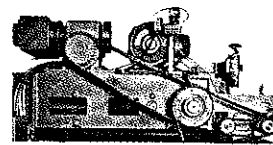
## power platen elevation

Top carpet platen elevates with heavy gearing and motor. Pushbutton system makes adjustment for stock thickness and depth of cut simple. Drive gears at each corner of the machine give uniform elevation. Platen height overtravel is protected by limit switches.



## automatic oiling

Automatic oiling protects critical lubrication points – including carpet drive chain. System actuates when carpet feed is energized. Oil cups are provided at other



general lubrication points. All bearings are heavy duty type. Drive side of cutterheads has double row ball

bearings for maximum support and long life. Zerks provided for easy lubrication.

# er planer – easy to and easy to maintain

### AUTOMATIC OILER

CARPET DRIVE OVERLOAD CLUTCH

TOP CUTTERHEAD GRINDING ATTACHMENT

POWER ROLL CHAIN TENSIONER

CONTOURED DUST SPOUT

HEAVY CAST IRON WAYS

LOWER ROLL HEIGHT ADJUSTMENT

LOWER CUTTERHEAD JOINTING MOTOR SWITCH

INTERCHANGEABLE GRINDER MOTOR

LOWER CUTTERHEAD GRINDING ATTACHMENT

