

RENEWED ENERGY MACHINERY SUPPLY CO.

(Div. of REC, LLC)

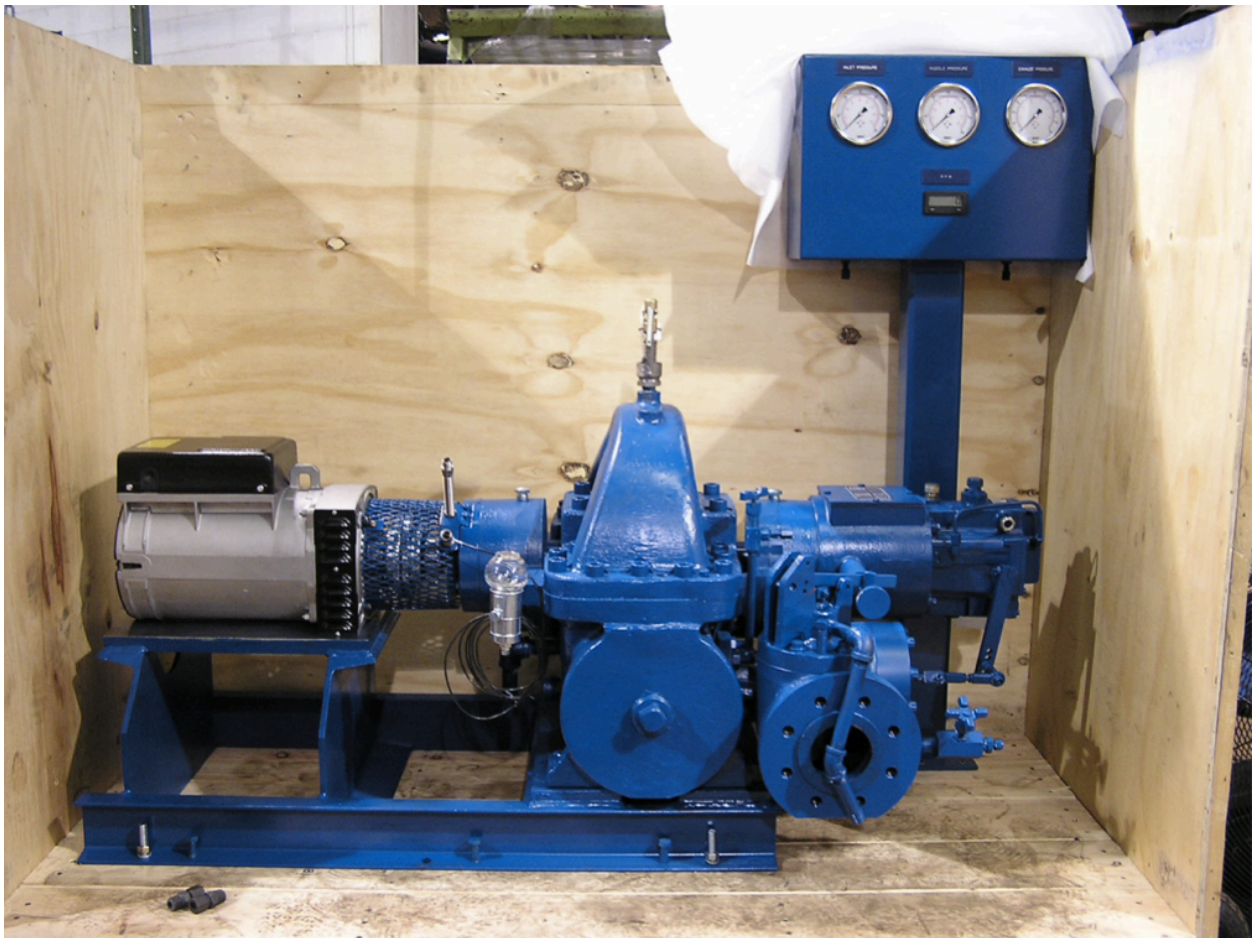
P.O. Box 41

Beavertown, PA 17813

570-765-2020 / rec2@ptd.net

<http://renewableenergyconsult.us>

5 KW - TURBINE GENERATOR



REMSCO

(Div. of REC, LLC)